

Hallstrand Angus

8TH ANNUAL PRODUCTION SALE



1:00 PM CDT, SATURDAY, APRIL 22, 2023
HELD AT THE FARM IN OGEMA, WISCONSIN

He Sells!



HALLSTRAND THREE RIVERS K3 20552468
SIRE: ELLINGSON THREE RIVERS 0158

He Sells!



HALLSTRAND THREE RIVERS K51 20555548
SIRE: ELLINGSON THREE RIVERS 8062

SELLING OVER 50 HEAD OF YEARLING BULLS & YEARLING OPEN & BRED HEIFERS

FARM/SALE ADDRESS:
W6861 County Rd I
Ogema, WI 54459



KURT - (715) 657-0233
TODD - (715) 820-1810
JED - (715) 657-0531

**KURT & CHRISTINA
HALLSTRAND
TODD HALLSTRAND**

Hallstrand Angus



KURT, CHRISTINA & JED



TODD & KAREN

We invite you to our 2023 production sale. We are excited to offer a great lineup of bulls and females during these very positive cattle markets. We welcome you to the ranch any time prior to the sale day to view the cattle. We value our customers and look forward to assisting you in your selection of your herd sire.

Our focus on our cow herd has been maternal traits. We feel by building a strong cowherd that can birth a calf, raise it on grass and milk, wean it at 50% mature cow weight and stay in production for years is a good cow. When we are selecting genetics, our key focuses are on maternal traits such as milk, marbling, feet & legs, udder quality, growth and docility.

We have several sire groups to offer this year. Leading off is the True North sire group. These bulls will offer calving-ease without sacrificing growth. The Ellingson Three Rivers 8062 and Rangeland sire groups have been standouts in growth, pushing the scales. We continued using the standout Sitz Barricade sire, which can easily be picked out with their depth of rib and thickness. We are also excited to be able to offer Lots 20 and 21 out of our Ellingson Three Rivers 0158 sire that we purchased in the 2021 Ellingson Sale. He comes from the EA Emblynette 7167 cow and ranks in the top 1% M and 1% HP.

This year we will be offering 10 handpicked heifers from the heart of our herd. The bred heifers have been bred to our herd sires EA Three Rivers 0158 or EA Rangeland 1190 Sires. These heifers are out of sires such as Raven Powerball, Sitz Barricade and Jindra Authority 697. They will be great investments into any cowherd.

All bulls have been fertility and Neogen GeneSeek tested for genetic traits and parentage tested. Our valued customers can feel confident of what they are purchasing. Also, the yearling heifers have been vaccinated and GeneSeek tested and the bred heifers have been Zoetis HD50k tested as well.

Again this year, we will have cattle in the sale ring during the auction. Our sale will be broadcast on DVAuction. Please register ahead of the sale if bidding on DVA. We will also take pre-sale bids or calls during the sale.

We want to thank you for considering using our genetics. Please join us prior to the sale for a fantastic lunch. We want to especially thank all of our family and friends for helping put all this together. Please feel free to contact us with any questions. The future looks bright in the cattle business, and we want to be a trusted source of high quality genetic needs for our valued customers.

Sincerely,
The Hallstrands

1 HALLSTRAND TRUE NORTH K14

BD: 03-16-2022 Bull *20555076 Tattoo: K14

+*S A V Rainfall 6846
+*Square B True North 8052
19405246 Elbanna of Conanga T209
ANGUS
SydGen Enhance
Hallstrand Blackcap H32
19968664 Hallstrand Blackcap T303

#**Coleman Charlo 0256
*S A V Blackcap May 4136
#*Connealy Consensus
Elbasta of Conanga 9703
#*SydGen Exceed 3223
SydGen Rita 2618
#*Connealy In Sure 8524
Hallstrand-t-192 U104

ACT. BW

69

ADJ. WW

670

Production EPDs

CED	BEPD	WEPD	YEPD	MILK	CW	MARB	RE	\$M	\$W	\$B	\$C
+16	-1.9	+69	+126	+38	+47	+98	+69	+78	+83	+149	+271

\$Values
Indexes

Carcass EPDs

CED	RW	WW	YW	DMI	YH	SC	Doc	HP	CEM	Milk	MW	MH	CWT	Marb	RE	Fat	Tend
2	4	57	37	65	76	5	3	73	31	13	83	92	65	11	37	89	27

DNA Percentage
Ranking

CALVING EASE DIRECT (CED), is expressed as a difference in percentage of unassisted births, with a higher value indicating greater calving ease in first-calf heifers. It predicts the average difference in ease with which a sire's calves will be born when he is bred to first-calf heifers.

BIRTH WEIGHT EPD (BEPD), expressed in pounds, is a predictor of a sire's ability to transmit birth weight to his progeny compared to that of other sires.

WEANING WEIGHT EPD (WEPD), expressed in pounds, is a predictor of a sire's ability to transmit weaning growth to his progeny compared to that of other sires.

YEARLING WEIGHT EPD (YEPD), expressed in pounds, is a predictor of a sire's ability to transmit yearling growth to his progeny compared to that of other sires.

MATERNAL MILK EPD (MILK), is a predictor of a sire's genetic merit for milk and mothering ability as expressed in his daughters compared to daughters of other sires. In other words, it is that part of a calf's weaning weight attributed to milk and mothering ability.

CARCASS WEIGHT EPD (CW), expressed in pounds is a predictor of the differences in hot carcass weight of a sire's progeny compared to progeny of other sires.

MARBLING EPD (MARB), expressed as a fraction of the difference in USDA marbling score of a sire's progeny compared to progeny of other sires.

RIBEYE AREA EPD (RE), expressed in square inches, is a predictor of the difference in ribeye area of a sire's progeny compared to progeny of other sires.

WEANED CALF VALUE (\$W), an index value expressed in dollars per head, is the expected average difference in future progeny performance for pre-weaning merit. \$W includes both revenue and cost adjustments associated with differences in birth weight, weaning direct growth, maternal milk, and mature cow size.

BEEF VALUE (\$B), an index value expressed in dollars per head, is the expected average difference in future progeny performance for post-weaning and carcass value compared to progeny of other sires.

Hallstrand Angus

8TH ANNUAL PRODUCTION SALE

1:00 PM CDT, SATURDAY, APRIL 22, 2023

HELD AT THE FARM IN OGEMA, WISCONSIN

SALE DAY PHONES:

Kurt Hallstrand (715) 657-0233
Todd Hallstrand (715) 820-1810
Tom Burke (816) 853-2697
Jed Hallstrand (715) 657-0531
Casey Jentz (608) 234-1998

AUCTIONEER:

Col. Scott Crawford (816) 804-1410
WI License #1973-052

WISCONSIN ANGUS ASSOCIATION REPRESENTATIVES:

Mark Schmidt, President
Chad Stevenson, Vice President
Jeremy Krusemark, Secretary/Treasurer

SALE MANAGER:

American Angus Hall of Fame (816) 532-0811
Tom Burke Kurt Schaff Alex Popplewell
(816) 853-2697 (816) 520-6447 (270) 566-8822
Buyers unable to attend the sale may send their bids to the sale manager, regional manager, field representatives or auctioneer.

SUPPLEMENTAL INFORMATION:

A supplemental sheet will be available sale day with sale order and update information. Announcements from auction block will take precedence over printed material. Current EPD and genetic recessive information is available online.

FOOD AND REFRESHMENTS:

Will be available sale day.

SALE LOCATION:

W6861 County Rd I, Ogema, WI 54459

ACCOMMODATIONS:

Ogema House Hotel: W4974 Holmes St, Ogema, WI 54459 (715) 767-5620
Countryside Motel: W5370 Granberg Rd, Prentice, WI 54556 (715) 428-2333

TERMS AND CONDITIONS:

Cattle will sell under the terms and conditions as recommended by the American Angus Association, including payment upon purchase.

LIABILITY:

All persons who attend this sale do so at their own risk, legal or otherwise, for their safety or for the behavior of the animals. The owners, sale management firm, and the sale staff assume no liability for property loss or any accident that may occur.

HERD HEALTH:

Cattle will be accompanied by health certificates for immediate shipment. All cattle are on their vaccinations and have had Bovishield Gold, Covexin 8 and Naseglen3. All cattle have had the GeneSeek or HD50K Pfizer and parentage test. All bulls will be semen tested in Mid-April.

GUARANTEE & INSURANCE:

All bulls sold will be fertility checked and guaranteed for a 90-day breeding season, after bull turnout. Chad Glaze of Vine Vest North Insurance will be overseeing cattle insurance for the sale and will be present the day of the sale. Hallstrand Angus will be offering a 50/50 cost sharing with each buyer that opts for mortality insurance the day of the sale through Vine Vest North Insurance. All claims on bulls will require a veterinarian check. Please notify us if there is an injury or a problem as soon as possible.

DELIVERY:

Again this year we are offering a \$50 discount per animal loaded out the day of the sale. If you do not plan to haul your cattle the day of the sale, please make sure we have the address you wish to have your cattle delivered to along with a good contact name and telephone number. We do our best to arrange a coordinated delivery route so being able to reach everyone is critical. All cattle must be delivered or picked up no later than June 1st.

SALE BOOK PREPARED BY:

Tom Burke, Kurt Schaff, Alex Popplewell, American Angus Hall of Fame, at the World Angus Headquarters, PO Box 660, Smithville, MO 64089-0660. Phone: (816) 532-0811, Fax: (816) 532-0851. E-Mail: angushall@angushall.com. Website: www.angushall.com.

DVAuction
Broadcasting Real-Time Auctions

AM EPDs contained in the hard copy of this sale book were current as of print date. Digital versions of this sale book can be viewed online at www.angus.org and will have EPDs updated every Friday with the exception of EPD references in footnotes and photos. Any PDF downloads from the website will contain EPDs current as of the date downloaded. References: American Angus Association®, AHIR®, AngusLink®, CAB®, Pathfinder®.

HALLSTRAND ANGUS - SOME OF THE BEST OF THE NORTHLAND!

The 8th Annual Production Sale for Hallstrand Angus is fortified with strong selection of both bulls and females. These 50 lots of Angus seedstock represent calving-ease, performance, maternal, soundness and longevity. The outstanding genetics are evident as you study this sale catalog.

Hallstrand Angus has become a strong source for reliable Angus seedstock. As grass time approaches, now is the time to add to your inventories.

It is a pleasure and privilege to work with Hallstrand family with this important event. Please don't hesitate to call on us at American Angus Hall of Fame if we can be of assistance in any way. We are here to serve.

Sincerely,



Tom Burke
(816) 853-2697



Kurt Schaff
(816) 520-6447



Alex Popplewell
(270) 566-8822

HALLSTRAND ANGUS BULLS



HALLSTRAND TRUE NORTH K14 • Lot 1



HALLSTRAND TRUE NORTH K85 • Lot 4

1 HALLSTRAND TRUE NORTH K14

BD: 03-16-2022 Bull *20555076 Tattoo: K14

+*S A V Rainfall 6846 #*Coleman Charlo 0256

+*Square B True North 8052
19405246 Elbanna of Conanga 1209

*S A V Blackcap May 4136
#*Connealy Consensus

ANGUS 360
SydGen Enhance

#*SydGen Exceed 3223
SydGen Rita 2618

Hallstrand Blackcap H32
19968664 Hallstrand Blackcap T303

#*Connealy In Sure 8524
Hallstrand-t-192 U104

ACT. BW

69

ADJ. WW

670

CED	BEPD	WEPD	YEPD	MILK	CW	MARB	RE	\$M	\$W	\$B	\$C						
+16	-1.9	+69	+126	+38	+47	+0.99	+0.68	+76	+83	+150	+271						
CED	BW	WW	YW	DMI	YH	SC	Doc	HP	CEM	Milk	MW	MH	CWT	Marb	RE	Fat	Tend
2	4	57	37	65	76	5	3	73	31	13	83	92	65	11	37	89	27

- This elite calving-ease prospect combines a modest individual birth ratio of 87 with an individual weaning ratio of 104 and features an exceptional EPD profile.
- This bull is backed by the ABS Global sires Square B True North 8052 and SydGen Enhance, and was produced as the first calf from a two-year-old dam.

2 HALLSTRAND TRUE NORTH K16 [OHF]

BD: 03-16-2022 Bull *20555081 Tattoo: K16

+*S A V Rainfall 6846 #*Coleman Charlo 0256

+*Square B True North 8052
19405246 Elbanna of Conanga 1209

*S A V Blackcap May 4136
#*Connealy Consensus

ANGUS 360
*Ellingson Homestead 6030

Elbasta of Conanga 9703
#*CTS Remedy IT01

***Hallstrand Eileen H27**
19968601 Hallstrand Eileen T642

EA Erica 1082
*Woodhill Robust X80-Z4

ACT. BW

64

ADJ. WW

653

CED	BEPD	WEPD	YEPD	MILK	CW	MARB	RE	\$M	\$W	\$B	\$C						
+10	-3	+65	+107	+37	+36	+0.51	+0.32	+82	+81	+102	+214						
CED	BW	WW	YW	DMI	YH	SC	Doc	HP	CEM	Milk	MW	MH	CWT	Marb	RE	Fat	Tend
16	16	64	92	25	78	26	77	49	7	11	96	85	86	52	89	80	6

- A calving-ease and high maternal prospect with a very modest individual birth ratio of 81 combined with an individual weaning ratio of 101.
- This son of the ABS Global sire Square B True North 8052 was produced as the first calf from a two-year-old dam.



3 HALLSTRAND TRUE NORTH K85

BD: 04-03-2022 Bull *20555191 Tattoo: K85

+*S A V Rainfall 6846 #*Coleman Charlo 0256

+*Square B True North 8052
19405246 Elbanna of Conanga 1209

*S A V Blackcap May 4136
#*Connealy Consensus

ANGUS 360
#*Jindra Acclaim

*Jindra 3rd Dimension
+Jindra Blackbird Lassy 1111

***Hallstrand Flower 6119 G29**
19726351 +*Jindra Flower J 748 6119

+Connealy Consensus 558B 6383
#*Hoff Flower SC 8303 748

ACT. BW

82

ADJ. WW

644

CED	BEPD	WEPD	YEPD	MILK	CW	MARB	RE	\$M	\$W	\$B	\$C						
+14	-1.3	+56	+107	+25	+30	+0.79	+0.69	+69	+58	+135	+244						
CED	BW	WW	YW	DMI	YH	SC	Doc	HP	CEM	Milk	MW	MH	CWT	Marb	RE	Fat	Tend
1	2	87	51	43	98	61	58	43	85	61	84	99	85	20	43	82	28

- The first of two flush brothers who sell by the ABS Global sire Square B True North 8052 from a donor dam by the Accelerated Genetics Pathfinder Sire Jindra Acclaim with a progeny weaning ratio of 111 on her first natural calf.
- The grandam is a Hallstrand foundation donor selected from Jindra Angus, and she was produced from the Pathfinder Dam Hoff Flower SC 8303 748.

4 HALLSTRAND TRUE NORTH K107

BD: 04-07-2022 Bull *20555189 Tattoo: K107

+*S A V Rainfall 6846 #*Coleman Charlo 0256

+*Square B True North 8052
19405246 Elbanna of Conanga 1209

*S A V Blackcap May 4136
#*Connealy Consensus

ANGUS 360
#*Jindra Acclaim

*Jindra 3rd Dimension
+Jindra Blackbird Lassy 1111

***Hallstrand Flower 6119 G29**
19726351 +*Jindra Flower J 748 6119

+Connealy Consensus 558B 6383
#*Hoff Flower SC 8303 748

ACT. BW

84

ADJ. WW

698

CED	BEPD	WEPD	YEPD	MILK	CW	MARB	RE	\$M	\$W	\$B	\$C						
+13	+6	+55	+106	+34	+36	+0.57	+0.68	+49	+57	+130	+218						
CED	BW	WW	YW	DMI	YH	SC	Doc	HP	CEM	Milk	MW	MH	CWT	Marb	RE	Fat	Tend
2	10	93	70	38	92	34	78	64	15	18	67	80	92	59	46	67	88

- A flush brother to the previous bull from an embryo mating backed by the proven sires Square B True North 8052 and Jindra Acclaim.
- The donor dam has a progeny weaning ratio of 111 on her first natural calf, and she was produced in the embryo program from the Hallstrand foundation donor Jindra Flower J 748 6119, who was in turn produced from the Jindra foundation Pathfinder Dam and embryo donor Hoff Flower SC 8303 748.

5 HALLSTRAND TRUE NORTH K20 [M1F]

BD: 03-19-2022 Bull 20555215 Tattoo: K20

+*S A V Rainfall 6846 #*Coleman Charlo 0256

+*Square B True North 8052
19405246 Elbanna of Conanga 1209

*S A V Blackcap May 4136
#*Connealy Consensus

ANGUS 360
#*Jindra Acclaim

*Jindra 3rd Dimension
+Jindra Blackbird Lassy 1111

Emerald Ln Bar-mereNell H780
19718998 Emerald Ln Bar-mereNell F539

Ela Gammer B939
Ela Barbaramere Nell C26

ACT. BW

95

ADJ. WW

596

CED	BEPD	WEPD	YEPD	MILK	CW	MARB	RE	\$M	\$W	\$B	\$C						
+3	+2.5	+71	+141	+36	+74	+0.96	+0.50	+55	+66	+193	+305						
CED	BW	WW	YW	DMI	YH	SC	Doc	HP	CEM	Milk	MW	MH	CWT	Marb	RE	Fat	Tend
53	56	41	7	72	40	56	21	9	81	19	17	46	10	13	52	84	42

- A three-quarter brother to Lots 3 and 4 by the ABS Global sire Square B True North 8052 from a two-year-old dam by the Accelerated Genetics Pathfinder Sire Jindra Acclaim who ranked second in annual registrations.

HALLSTRAND ANGUS BULLS



HALLSTRAND RANGELAND K31 • Lot 12



HALLSTRAND THREE RIVERS K51 • Lot 15

12 HALLSTRAND RANGELAND K31 [M1F-OHF]

BD: 03-25-2022 Bull 20553326 Tattoo: K31

*Basin Rainmaker 4404 Basin Rainmaker 2704
 +*Basin Joy 1036
***Ellingson Rangeland**
 19590500 *EA Emblynette 7009 #*CTS Remedy 1T01
 EA Emblynette 5241
ANGUS 3S #Byergo Titus 6340 #Byergo Black Magic 3348
Hallstrand Ellana 607 G47 #Byergo Miss Elia 2834
 19854680 DRF Miss All in 607 #*Deer Valley All In
 DRF Miss Regis 317

ACT. BW 77
 ADJ. WW 724

CED	BEPD	WEPD	YEPD	MILK	CW	MARB	RE	\$M	\$W	\$B	\$C						
+7	-.3	+79	+135	+36	+68	+12	+85	+88	+87	+134	+262						
CED	BW	WW	YW	DMI	YH	SC	Doc	HP	CEM	Milk	MW	MH	CWT	Marb	RE	Fat	Tend
36	17	3	7	93	13	1	24	5	22	18	11	15	4	96	17	73	96

- A moderate birth weight performing bull with an individual birth ratio of 90 combined with an individual weaning ratio of 112.
- This son of Ellingson Rangeland is from a dam with a progeny birth ratio of 90 combined with a progeny weaning ratio of 112 on two calves.

13 HALLSTRAND RANGELAND K72

BD: 03-31-2022 Bull 20553377 Tattoo: K72

*Basin Rainmaker 4404 Basin Rainmaker 2704
 +*Basin Joy 1036
***Ellingson Rangeland**
 19590500 *EA Emblynette 7009 #*CTS Remedy 1T01
 EA Emblynette 5241
ANGUS 3S #*Connealy Guinness #Connealy Dublin 8223
Hallstrand Lassie E107 Panda of Conanga 3609
 19023716 Hallstrand N-W H802 #S A V Net Worth 4200
 BAR Lassie 5094

ACT. BW 85
 ADJ. WW 638

CED	BEPD	WEPD	YEPD	MILK	CW	MARB	RE	\$M	\$W	\$B	\$C						
+6	+4	+67	+122	+23	+62	+73	+61	+70	+60	+168	+288						
CED	BW	WW	YW	DMI	YH	SC	Doc	HP	CEM	Milk	MW	MH	CWT	Marb	RE	Fat	Tend
56	53	28	18	85	33	53	92	5	3	82	19	39	8	35	60	89	37

- A son of the ST Genetics sire Ellingson Rangeland with an individual birth ratio of 96 from a dam by the Accelerated Genetics Pathfinder Sire Connealy Guinness.

14 HALLSTRAND RANGELAND K90

BD: 04-03-2022 Bull 20553373 Tattoo: K90

*Basin Rainmaker 4404 Basin Rainmaker 2704
 +*Basin Joy 1036
***Ellingson Rangeland**
 19590500 *EA Emblynette 7009 #*CTS Remedy 1T01
 EA Emblynette 5241
ANGUS 3S #*Plattmereg Weigh Up K360 #*Sitz Upward 307R
Emerald Ln Countess F501 #Barbara of Plattmereg 337
 19363551 #Ela Countess Z627 #*S S Objective T510 OT26
 +JVC Countess 906 V9130

ACT. BW 92
 ADJ. WW 595

CED	BEPD	WEPD	YEPD	MILK	CW	MARB	RE	\$M	\$W	\$B	\$C						
+2	+2.1	+80	+132	+25	+62	+60	+87	+78	+76	+158	+283						
CED	BW	WW	YW	DMI	YH	SC	Doc	HP	CEM	Milk	MW	MH	CWT	Marb	RE	Fat	Tend
77	85	2	11	93	16	73	70	26	21	66	10	14	3	65	5	5	91

- This bull was produced from a dam who records a progeny weaning ratio of 101 on three calves and stems from a Pathfinder grandam while tracing to a third dam who is a full sister to Mytty In Focus.

15 HALLSTRAND THREE RIVERS K51

BD: 03-29-2022 Bull 20555548 Tattoo: K51

*Ellingson Homestead 6030 #*CTS Remedy 1T01
 EA Erica 1082
***Ellingson Three Rivers 8062** #*Ellingson Chaps 4095
 19203618 *EA Emblynette 6279 #*EA Emblynette 2159
ANGUS 3S #*S A V Final Answer 0035 #Sitz Traveler 8180
Hallstrand Rita E70 S A V Emulous 8145
 19002420 Hallstrand Rita H502 *44 Envision
 Hallstrand Rita H312

ACT. BW 83
 ADJ. WW 663

CED	BEPD	WEPD	YEPD	MILK	CW	MARB	RE	\$M	\$W	\$B	\$C						
+0	+2.4	+76	+133	+23	+59	+60	+85	+86	+67	+162	+296						
CED	BW	WW	YW	DMI	YH	SC	Doc	HP	CEM	Milk	MW	MH	CWT	Marb	RE	Fat	Tend
88	76	16	25	31	41	62	63	1	44	71	43	49	16	49	18	17	2

- This bull combines an individual birth ratio of 93 with an individual weaning ratio of 103 by the Alta Genetics sire Ellingson Three Rivers 8062.
- The dam has a progeny birth ratio of 94 combined with a progeny weaning ratio of 103 on four calves.

16 HALLSTRAND THREE RIVERS K35

BD: 03-27-2022 Bull 20555529 Tattoo: K35

*Ellingson Homestead 6030 #*CTS Remedy 1T01
 EA Erica 1082
***Ellingson Three Rivers 8062** #*Ellingson Chaps 4095
 19203618 *EA Emblynette 6279 #*EA Emblynette 2159
ANGUS 3S Ellingson Right Answer 4240 Sitz Right Answer 506Y
Hallstrand Bando F103 EA Rosetta 7871
 19394935 Hallstrand Bando T900 #*S A V Final Answer 0035
 +BAR Bando 5009

ACT. BW 82
 ADJ. WW 705

CED	BEPD	WEPD	YEPD	MILK	CW	MARB	RE	\$M	\$W	\$B	\$C						
+3	+1	+74	+130	+39	+48	+68	+65	+90	+84	+136	+266						
CED	BW	WW	YW	DMI	YH	SC	Doc	HP	CEM	Milk	MW	MH	CWT	Marb	RE	Fat	Tend
71	23	10	19	86	19	60	74	6	66	2	33	29	28	49	36	80	26

- This bull has an individual birth ratio of 93 with an individual weaning ratio of 109 by the Alta Genetics sire Ellingson Three Rivers 8062 from a dam with a progeny weaning ratio of 103 on three calves and a progeny yearling ratio of 112 on one head.

17 HALLSTRAND THREE RIVERS K97

BD: 04-04-2022 Bull 20555631 Tattoo: K97

*Ellingson Homestead 6030 #*CTS Remedy 1T01
 EA Erica 1082
***Ellingson Three Rivers 8062** #*Ellingson Chaps 4095
 19203618 *EA Emblynette 6279 #*EA Emblynette 2159
ANGUS 3S #*Marcys Crusher 349 #*Sitz Upward 307R
Marcys Treasure 5155 #*Marcys Erica 393
 18219307 Marcys Treasure 677 +Marcys Right Time 391
 +Marcys Treasure 495

ACT. BW 85
 ADJ. WW 676

CED	BEPD	WEPD	YEPD	MILK	CW	MARB	RE	\$M	\$W	\$B	\$C						
+1	+2.7	+72	+130	+25	+62	+39	+84	+74	+62	+147	+265						
CED	BW	WW	YW	DMI	YH	SC	Doc	HP	CEM	Milk	MW	MH	CWT	Marb	RE	Fat	Tend
84	78	10	11	93	23	100	68	17	50	43	14	17	10	71	7	31	18

- A son of Ellingson Three Rivers 8062 with an individual birth ratio of 96 combined with an individual weaning ratio of 105 from a dam bred in the Marcy herd in Nebraska.

HALLSTRAND ANGUS BULLS



HALLSTRAND THREE RIVERS K53 • Lot 18



HALLSTRAND THREE RIVERS K3 • Lot 21

18 HALLSTRAND THREE RIVERS K53

BD: 03-29-2022 Bull 20555517 Tattoo: K53

*Ellingson Homestead 6030 #CTS Remedy IT01

EA Erica 1082

***Ellingson Three Rivers 8062**

19203618 *EA Emblynette 6279

ANGUS 3S

##*Coleman Charlo 0256

Hallstrand Lassie F44

19394942 Hallstrand Lassie H540

ACT. BW

82

ADJ. WW

600

CED	BEPD	WEPD	YEPD	MILK	CW	MARB	RE	\$M	\$W	\$B	\$C
+5	+1.1	+72	+126	+23	+50	+51	+76	+100	+71	+141	+283

CED	BW	WW	YW	DMI	YH	SC	Doc	HP	CEM	Milk	MW	MH	CWT	Marb	RE	Fat	Tend
78	61	10	24	76	75	61	23	15	64	86	53	64	19	63	9	17	28

• A unique pedigree herd sire prospect with an individual birth ratio of 93 by Ellingson Three Rivers 8062 from a dam with a progeny birth ratio of 91 on three calves, backed by Coleman Charlo 0256 and Mohnen Impressive 1093.

19 HALLSTRAND THREE RIVERS K115 [DDC]

BD: 04-08-2022 Bull 20568597 Tattoo: K115

*Ellingson Homestead 6030 #CTS Remedy IT01

EA Erica 1082

***Ellingson Three Rivers 8062**

19203618 *EA Emblynette 6279

ANGUS 3S

##*G A R Predestined

Ela Eblinette W217

16415566 FV Eblinette 8033

ACT. BW

93

ADJ. WW

667

CED	BEPD	WEPD	YEPD	MILK	CW	MARB	RE	\$M	\$W	\$B	\$C
-3	+4.6	+81	+140	+16	+66	+42	+73	+74	+56	+151	+270

CED	BW	WW	YW	DMI	YH	SC	Doc	HP	CEM	Milk	MW	MH	CWT	Marb	RE	Fat	Tend
92	88	8	29	87	45	50	59	15	50	99	37	32	15	53	30	86	11

• This bull records an individual weaning ratio of 103 sired by Ellingson Three Rivers 8062 from a dam who records 12 calves on record in the AHIR program.

20 HALLSTRAND THREE RIVERS K2

BD: 02-17-2022 Bull 20552467 Tattoo: K2

*Ellingson Three Rivers 8062 *Ellingson Homestead 6030

*EA Emblynette 6279

***Ellingson Three Rivers 0158**

19853299 *EA Emblynette 7167

ANGUS 3S

##*Spring Cove Reno 4021

+Hallstrand Lady 6184 G33

19723664 +*RB Lady Aviator 167-6184

ACT. BW

75

ADJ. WW

611

CED	BEPD	WEPD	YEPD	MILK	CW	MARB	RE	\$M	\$W	\$B	\$C
+8	+7	+66	+104	+28	+32	+85	+61	+98	+72	+117	+250

CED	BW	WW	YW	DMI	YH	SC	Doc	HP	CEM	Milk	MW	MH	CWT	Marb	RE	Fat	Tend
24	22	44	84	64	60	20	28	2	48	34	88	56	91	15	71	74	90

• A low birth weight son of Ellingson Three Rivers 0158 stemming from a granddam who was produced in the embryo program at Riley Brothers, tracing to a third dam who is a full sister to RB Tour of Duty 177.

21 HALLSTRAND THREE RIVERS K3 [M1F]

BD: 02-26-2022 Bull 20552468 Tattoo: K3

*Ellingson Three Rivers 8062

*Ellingson Three Rivers 0158

19853299 *EA Emblynette 7167

ANGUS 3S

Jindra Authority 697

Hallstrand Lassie H018 G74

19723665 Hallstrand J U104 H802

*Ellingson Homestead 6030

*EA Emblynette 6279

*Boyd Authority 3100

EA Emblynette 5099

##*Jindra Acclaim

##*Jindra Chloe J 678 220

E L A Gammer 3J15 Joe

Hallstrand N-W H802

ACT. BW

90

ADJ. WW

706

CED	BEPD	WEPD	YEPD	MILK	CW	MARB	RE	\$M	\$W	\$B	\$C
+6	+1.8	+67	+122	+35	+59	+40	+39	+67	+69	+137	+245

CED	BW	WW	YW	DMI	YH	SC	Doc	HP	CEM	Milk	MW	MH	CWT	Marb	RE	Fat	Tend
39	40	38	19	86	16	56	59	10	17	8	30	35	26	69	79	92	42

• This bull records an individual weaning ratio of 109 and he is sired by a son of the Alta Genetics sire Ellingson Three Rivers 8062, produced as the first calf from a two-year-old dam by the Hallstrand sire Jindra Authority 697.

22 HALLSTRAND TRAPPER K92 [DDF-M1F]

BD: 04-04-2022 Bull 20553389 Tattoo: K92

*Paintrock Mountain Man

***Paintrock Trapper**

18270980 Emulous of Paintrock 93-9

ANGUS 3S

##*S Chisum 6175

Hallstrand Chisum 235

17470907 Hallstrand Predestined 171A

##*Kesslers Frontman R001

Enchantress of PR 3635

Isaacs Alliance 7161

Paintrock Emulous 446-6

S Alliance 3313

##*S Gloria 464

##*G A R Predestined

North Fork Lassie 1057

ACT. BW

72

ADJ. WW

648

CED	BEPD	WEPD	YEPD	MILK	CW	MARB	RE	\$M	\$W	\$B	\$C
+5	+1.5	+65	+111	+22	+55	+43	+50	+79	+62	+136	+255

CED	BW	WW	YW	DMI	YH	SC	Doc	HP	CEM	Milk	MW	MH	CWT	Marb	RE	Fat	Tend
58	57	21	48	69	6	71	98	20	96	49	56	27	16	66	69	75	38

• A moderate birth weight bull by the Genex sire Paintrock Trapper with an individual birth ratio of 82 combined with an individual weaning ratio of 100.
• The dam has a progeny birth ratio of 95 on seven calves.



HALLSTRAND TRAPPER K92 • Lot 22

HALLSTRAND ANGUS BULLS



HALLSTRAND FAIR-N-SQUARE K22 • Lot 23



HALLSTRAND CC 782E K136 • Lot 26

23 HALLSTRAND FAIR-N-SQUARE K22

BD: 03-20-2022 Bull 20553458 Tattoo: K22

***Woodhill Blueprint** #*Connealy Confidence Plus
***Myers Fair-N-Square M39** *Woodhill Evergreen Z291-B233
19418329 Myers Miss Beauty M136 #Connealy Thunder
ANGUS 3S #Myers Miss Beauty M476 **ACT. BW**
#*Jindra Acclaim *Jindra 3rd Dimension 81
Hallstrand Evr Entens G11 +Jindra Blackbird Lassy 1111
19724917 Hallstrand Evr Entense H300 **S A V Final Answer 0035 **ADJ. WW**
Hallstrand Aberdeen S018 Hallstrand Aberdeen S018 624

CED	BEPD	WEPD	YEPD	MILK	CW	MARB	RE	\$M	\$W	\$B	\$C						
+1	+1.5	+75	+128	+28	+63	+74	+63	+55	+72	+174	+281						
CED	BW	WW	YW	DMI	YH	SC	Doc	HP	CEM	Milk	MW	MH	CWT	Marb	RE	Fat	Tend
84	75	12	19	48	41	17	11	71	55	48	11	35	6	44	49	55	47

• A moderate birth weight prospect with an individual birth ratio of 94 by the ST Genetics sire Myers Fair-N-Square M39 from a dam by the Accelerated Genetics Pathfinder Sire Jindra Acclaim.

24 HALLSTRAND FAIR-N-SQUARE K62

BD: 03-30-2022 Bull *20553460 Tattoo: K62

***Woodhill Blueprint** #*Connealy Confidence Plus
***Myers Fair-N-Square M39** *Woodhill Evergreen Z291-B233
19418329 Myers Miss Beauty M136 #Connealy Thunder
ANGUS 3S #Myers Miss Beauty M476 **ACT. BW**
Hallstrand Robust T628 *Woodhill Robust X80-Z4 98
Hallstrand Elluas Elite G134 Hallstrand-t-22 Quiet Lad **ADJ. WW**
19688486 Hallstrand Elluas Elite T324 Hallstrand TC Total 410 S018
Hallstrand-t Gridiron 67B 639

CED	BEPD	WEPD	YEPD	MILK	CW	MARB	RE	\$M	\$W	\$B	\$C						
-5	+3.7	+83	+124	+28	+53	+57	+84	+68	+78	+134	+242						
CED	BW	WW	YW	DMI	YH	SC	Doc	HP	CEM	Milk	MW	MH	CWT	Marb	RE	Fat	Tend
89	80	7	65	68	33	21	66	20	76	66	29	24	15	45	13	62	91

• This son of the ST Genetics sire Myers Fair-N-Square M39 is backed by generations of Hallstrand breeding on the dam's side of the pedigree.

25 HALLSTRAND COWBOY UP K100 [DDF]

BD: 04-04-2022 Bull 20552465 Tattoo: K100

#*HA Cowboy Up 5405 *HA Outside 3008
Hallstrand Cowboy Up F33 #*HA Blackcap Lady 1602
19362029 Hallstrand Forever Lady T315 Hallstrand TC Total 410 S018
ANGUS 3S Hallstrand-T Gridiron 22B **ACT. BW**
#*S A V Ten Speed 3022 #*A R Ten X 7008 S A 87
Hallstrand Forever Lady E19 #S A V Madame Pride 1134 **ADJ. WW**
19008586 Hallstrand Forever Lady T509 #*Jindra Double Vision
Hallstrand-t-22b U104 681

CED	BEPD	WEPD	YEPD	MILK	CW	MARB	RE	\$M	\$W	\$B	\$C						
+5	+2.1	+71	+132	+28	+47	+64	+40	+58	+64	+135	+233						
CED	BW	WW	YW	DMI	YH	SC	Doc	HP	CEM	Milk	MW	MH	CWT	Marb	RE	Fat	Tend
76	63	35	22	62	31	28	69	29	74	50	27	16	54	56	78	63	61

• This bull has an individual birth ratio of 98 combined with an individual weaning ratio of 105, and he is sired by a son of the record-selling HA Cowboy Up 5405 from a dam with a progeny birth ratio of 95 combined with a progeny weaning ratio of 105 on three calves.

26 HALLSTRAND CC 782E K136 [M1F-OHF]

BD: 04-20-2022 Bull 20552466 Tattoo: K136

Connealy Consensus 782E #*Connealy Consensus
Hallstrand CC 782E T525 Joni of Conanga 221
18314005 Hallstrand-T BAR 004 107 BAR Traveler 004 6101
ANGUS 3S Blk Ang Blackbird 2012 **ACT. BW**
#*JMB Traction 292 #*Sitz Top Game 561X 70
Hallstrand Evr Entense F56 *JMB Emulota 013
19394934 Hallstrand Evr Entense H300 **S A V Final Answer 0035 **ADJ. WW**
Hallstrand Aberdeen S018 Hallstrand Aberdeen S018 622

CED	BEPD	WEPD	YEPD	MILK	CW	MARB	RE	\$M	\$W	\$B	\$C						
+8	-.9	+60	+106	+31	+32	+40	+33	+63	+70	+101	+194						
CED	BW	WW	YW	DMI	YH	SC	Doc	HP	CEM	Milk	MW	MH	CWT	Marb	RE	Fat	Tend
71	45	35	45	63	34	48	38	81	89	18	74	88	52	77	87	79	76

• This low birth weight calving-ease prospect has an individual birth ratio of 80 from a dam who records a progeny birth ratio of 94 on three calves.

27 HALLSTRAND ROBUST K110

BD: 04-07-2022 Bull 20552464 Tattoo: K110

*Woodhill Robust X80-Z4 #*Hoover Dam
Hallstrand Robust F111 *Woodhill Blackbird U128-X80
19362020 Hallstrand Lassie H427 #*Jindra Double Vision
ANGUS 3S Hallstrand N-W H802 **ACT. BW**
+*G A R Ashland *G A R Early Bird 89
Hallstrand Evergreen E25 G5 **Chair Rock Ambush 1018
19726355 Hallstrand Evergreen E25 #*S Whitlock 179 **ADJ. WW**
Hallstrand-t R Answer45 T201 642

CED	BEPD	WEPD	YEPD	MILK	CW	MARB	RE	\$M	\$W	\$B	\$C						
+2	+1.8	+65	+116	+19	+31	+67	+41	+62	+55	+113	+209						
CED	BW	WW	YW	DMI	YH	SC	Doc	HP	CEM	Milk	MW	MH	CWT	Marb	RE	Fat	Tend
51	16	80	63	68	38	94	66	58	31	86	69	67	90	50	78	56	81

• A grandson of the noted sire Woodhill Robust X80-Z4 and GAR Ashland with a pedigree fortified by Hallstrand breeding.

28 HALLSTRAND CC782 K162 [OHF]

BD: 05-04-2022 Bull *20552470 Tattoo: K162

Connealy Consensus 782E #*Connealy Consensus
Hallstrand CC 782E T525 Joni of Conanga 221
18314005 Hallstrand-T BAR 004 107 BAR Traveler 004 6101
ANGUS 3S Blk Ang Blackbird 2012 **ACT. BW**
Hallstrand TC Total 410 S018 #TC Total 410 80
Hallstrand Rita H312 CSP Everelda Entense S018
17788132 Hallstrand N-W H807 #S A V Net Worth 4200 **ADJ. WW**
BAR Rita 5026 BAR Rita 5026 649

CED	BEPD	WEPD	YEPD	MILK	CW	MARB	RE	\$M	\$W	\$B	\$C						
+7	+2	+41	+66	+31	+11	+53	+04	+76	+54	+80	+180						
CED	BW	WW	YW	DMI	YH	SC	Doc	HP	CEM	Milk	MW	MH	CWT	Marb	RE	Fat	Tend
33	25	90	94	13	94	85	72	22	37	19	96	98	97	58	98	65	61

• This bull has an individual birth ratio of 99 combined with an individual weaning ratio of 102 from a productive dam with a progeny weaning ratio of 105 on seven calves and a progeny yearling ratio of 111 on three head.

HALLSTRAND ANGUS BULLS

29 HALLSTRAND REGARD K150

BD: 04-27-2022 Bull 20552471 Tattoo: K150

#**S A V Regard 4863 #**S A V Resource 1441

Hallstrand Regard H629 #+S A V Blackcap May 5530
18701689 Hallstrand Pride 189 H014 Hallstrand TC Total 410 S018

ANGUS

*Woodhill Robust X80-Z4 #*Hoover Dam
Hallstrand Reba H547 #*Woodhill Blackbird U128-X80

18314010 Hallstrand Reba 6595 H326 Hallstrand 6595 H910
Hoff Reba Gal 9920 457

ACT. BW
87

ADJ. WW
659

CED	BEPD	WEPD	YEPD	MILK	CW	MARB	RE	\$M	\$W	\$B	\$C
+0	+3.8	+77	+134	+25	+60	+19	+78	+61	+64	+132	+232

CED	BW	WW	YW	DMI	YH	SC	Doc	HP	CEM	Milk	MW	MH	CWT	Marb	RE	Fat	Tend
60	74	13	16	87	20	15	24	36	82	51	19	22	26	90	15	25	37

- A late April bull with an individual birth ratio of 98 combined with an individual weaning ratio of 102.
- The dam has a progeny weaning ratio of 103 on three calves and a progeny yearling ratio of 105 on one head.



HALLSTRAND BARRICADE K69 • Lot 31

30 HALLSTRAND RESOURCE K151

BD: 04-28-2022 Bull 20552469 Tattoo: K151

#**S A V Resource 1441 #Rito 707 of Ideal 3407 7075

*Ellingson Resource 6219 #S A V Blackcap May 4136
18543511 EA Queen Dolly 3099 *Ellingson Plateau 1155

ANGUS

*V A R Rampage 5408 #**Quaker Hill Rampage 0A36
Burns Blackcap H453 #*EXAR Blackcap 2079

19102566 #Burns Blackcap 4253 #*Connealy In Sure 8524
Burns Blackcap 2353

ACT. BW
84

ADJ. WW
668

CED	BEPD	WEPD	YEPD	MILK	CW	MARB	RE	\$M	\$W	\$B	\$C
+3	+3.2	+65	+114	+21	+50	+35	+85	+63	+50	+135	+238

CED	BW	WW	YW	DMI	YH	SC	Doc	HP	CEM	Milk	MW	MH	CWT	Marb	RE	Fat	Tend
59	81	58	45	38	36	16	83	6	86	87	52	39	54	85	21	21	62

- This bull records an individual birth ratio of 96 combined with an individual weaning ratio of 103 from a dam who balances a progeny birth ratio of 93 with a progeny weaning ratio of 103 on two calves.
- The grandam is a Pathfinder Dam.

31 HALLSTRAND BARRICADE K69

BD: 03-31-2022 Commercial Bull Tattoo: K69

*Sitz Stellar 726D #*Mohnen Substantial 272

*Sitz Barricade 632F #SITZ Pride 200B
19078148 **SITZ Barabamere Nell 765D *Sitz Superior 10971

ANGUS

Sitz Barabamere Nell 73T

Hallstrand T644

ACT. BW
94

ADJ. WW
770

CED	BEPD	WEPD	YEPD	HP	MILK	MARB	RE
59	75	12	24	26	72	66	28

32 HALLSTRAND BARRICADE K6

BD: 03-20-2022 Commercial Bull Tattoo: K69

*Sitz Stellar 726D #*Mohnen Substantial 272

*Sitz Barricade 632F #SITZ Pride 200B
19078148 **SITZ Barabamere Nell 765D *Sitz Superior 10971

ANGUS

Sitz Barabamere Nell 73T

Hallstrand F15

ACT. BW
81

ADJ. WW
699

CED	BEPD	WEPD	YEPD	HP	MILK	MARB	RE
62	56	72	64	14	35	31	96

33 HALLSTRAND BARRICADE K91

BD: 04-03-2022 Commercial Bull Tattoo: K91

*Sitz Stellar 726D #*Mohnen Substantial 272

*Sitz Barricade 632F #SITZ Pride 200B
19078148 **SITZ Barabamere Nell 765D *Sitz Superior 10971

ANGUS

Sitz Barabamere Nell 73T

Hallstrand T627

ACT. BW
89

ADJ. WW
768

CED	BEPD	WEPD	YEPD	HP	MILK	MARB	RE
100	99	3	42	4	83	76	39

34 HALLSTRAND TAHOE K9

BD: 03-15-2022 Commercial Bull Tattoo: K91

*Tehama Upward Y238 #Sitz Upward 307R

**Tehama Tahoe B767 #Tehama Elite Blackbird T735
17617177 **Tehama Mary Blackbird Y684 #S A V Final Answer 0035

ANGUS

Tehama Mary Blackbird T073

Hallstrand H34

ACT. BW
81

ADJ. WW
644

CED	BEPD	WEPD	YEPD	HP	MILK	MARB	RE
93	69	7	24	28	86	46	19

35 HALLSTRAND POWERBALL K30

BD: 03-25-2022 Commercial Bull Tattoo: K30

#**PA Power Tool 9108 #*G A R Predestined

**Raven Powerball 53 #Shamrocks Beebee Queen 3095
17632447 **Raven Emma E 4241 #*Hoover Dam

ANGUS

PCAR Emma E 2215

Hallstrand T310

ACT. BW
77

ADJ. WW
713

CED	BEPD	WEPD	YEPD	HP	MILK	MARB	RE
4	11	100	95	39	2	24	56

36 HALLSTRAND TORQUE K74

BD: 04-01-2022 Commercial Bull Tattoo: K74

#S A V 004 Density 4336 #S A V 8180 Traveler 004

**Bruin Torque 5261 S A V May 7238
18248293 +Falcon Blackbird 6071 #Connealy Dateline

ANGUS

#Vermilion Blackbird 5044

Hallstrand HLC 77

ACT. BW
88

ADJ. WW
669

CED	BEPD	WEPD	YEPD	HP	MILK	MARB	RE
80	90	5	8	38	69	73	21



HALLSTRAND POWERBALL K30 • Lot 35



HALLSTRAND TORQUE K75 • Lot 37

37 HALLSTRAND TORQUE K75

BD: 04-01-2022 Commercial Bull Tattoo: K75

#+S A V 004 Density 4336 #S A V 8180 Traveler 004
 #+Bruin Torque 5261 S A V May 7238
 18248293 #Falcon Blackbird 6071 #Connealy Dateline
 #Vermilion Blackbird 5044

ACT. BW 80
 ADJ. WW 650

Hallstrand T518

CED	BEPD	WEPD	YEPD	HP	MILK	MARB	RE
49	55	80	27	78	21	89	51

38 HALLSTRAND RELIABLE K141

BD: 04-22-2022 Commercial Bull Tattoo: K141

*Woodhill Reliable #*Connealy Confidence Plus
 #Woodhill Reliable D93-G209 #Woodhill Blackbird X297-Z45
 19541609 #Woodhill Evergreen Z287-D93 #Baldrige Territory Z068
 #*Woodhill Evergreen U6-Z287

ACT. BW 71
 ADJ. WW 674

Hallstrand H40

CED	BEPD	WEPD	YEPD	HP	MILK	MARB	RE
28	47	52	21	83	24	18	25

39 HALLSTRAND CONSENSUS T525 K129

BD: 04-17-2022 Commercial Bull Tattoo: K129

Connealy Consensus 782E #*Connealy Consensus
 Hallstrand CC 782E T525 Joni of Conanga 221
 18314005 Hallstrand-T BAR 004 107 BAR Traveler 004 6101
 #*Connealy Consensus Blk Ang Blackbird 2012

ACT. BW 82
 ADJ. WW 688

Hallstrand T519

CED	BEPD	WEPD	YEPD	HP	MILK	MARB	RE
5	17	70	14	89	3	30	69

40 HALLSTRAND CONSENSUS T525 K157

BD: 05-02-2022 Commercial Bull Tattoo: K157

Connealy Consensus 782E #*Connealy Consensus
 Hallstrand CC 782E T525 Joni of Conanga 221
 18314005 Hallstrand-T BAR 004 107 BAR Traveler 004 6101
 #*Connealy Consensus Blk Ang Blackbird 2012

ACT. BW 82
 ADJ. WW 755

Hallstrand H530

CED	BEPD	WEPD	YEPD	HP	MILK	MARB	RE
81	72	37	48	93	28	28	94



41 HALLSTRAND LASSIE K65

BD: 03-30-2022 Cow 20553379 Tattoo: K65

*Basin Rainmaker 4404 Basin Rainmaker 2704
 #*Ellingson Rangeland #+Basin Joy 1036
 19590500 *EA Emblynette 7009 #*CTS Remedy 1T01
 EA Emblynette 5241
 JVC Final Answer 0035 9112 #*S A V Final Answer 0035
 #*Coleman Rita 603
 ELA Lassie Z647 +*S S Objective T510 OT26
 17425912 ELA Blackbird W206 Falcon Blackbird 2867

CED	BEPD	WEPD	YEPD	MILK	CW	MARB	RE	\$M	\$W	\$B	\$C
+5	+1.6	+73	+122	+30	+48	+1.59	+1.59	+66	+70	+148	+258

This high-indexing heifer has an individual weaning ratio of 116 by the ST Genetics sire Ellingson Rangeland from a dam with a progeny weaning ratio of 101 on nine calves.

42 HALLSTRAND ERICA K135 [M1F]

BD: 04-19-2022 Cow 20552478 Tattoo: K135

#*Jindra Acclaim #Jindra 3rd Dimension
 #Jindra Authority 697 #Jindra Blackbird Lassy 1111
 19039484 #+Jindra Chloe J 678 220 #Hoff Insignia 697 224
 Hoff Rexella S C 915 678
 #*Sitz Upward 307R
 #+Marcys Erica 393
 #Baldrige Sledgehammer S621
 #+Marcys Erica 5108

CED	BEPD	WEPD	YEPD	MILK	CW	MARB	RE	\$M	\$W	\$B	\$C
+2	+2.7	+57	+111	+25	+54	+1.19	+1.47	+39	+43	+142	+223

A daughter of the Hallstrand senior herd sire Jindra Authority 697 from a dam selected by Hallstrand Angus from Marcy Angus in Nebraska with a progeny weaning ratio of 104 on four calves, from the same cow family as Marcys Scale Crusher.

43 HALLSTRAND K24

BD: 03-21-2022 Commercial Cow Tattoo: K24

#*HA Cowboy Up 5405 #*HA Outside 3008
 #Hallstrand Cowboy Up F33 #*HA Blackcap Lady 1602
 19362029 Hallstrand Forever Lady T315 Hallstrand TC Total 410 S018
 Hallstrand-T Gridiron 22B

Hallstrand E6

44 HALLSTRAND K44

BD: 03-28-2022 Commercial Cow Tattoo: K44

#*HA Cowboy Up 5405 #*HA Outside 3008
 #Hallstrand Cowboy Up F33 #*HA Blackcap Lady 1602
 19362029 Hallstrand Forever Lady T315 Hallstrand TC Total 410 S018
 Hallstrand-T Gridiron 22B

Hallstrand E30

45 HALLSTRAND H25

BD: 03-23-2022 Commercial Cow Tattoo: K25

#*Connealy Consensus #KMK Alliance 6595 187
 Connealy Consensus 782E Blinda of Conanga 004
 17028978 Joni of Conanga 221 #*Mytty In Focus
 Joana of Conanga 6220

Hallstrand H55

46 HALLSTRAND K117

BD: 04-09-2022 Commercial Cow Tattoo: K117

*Ellingson Homestead 6030 #*CTS Remedy 1T01
 #*Ellingson Three Rivers 8062 EA Erica 1082
 19203618 *EA Emblynette 6279 #*Ellingson Chaps 4095
 #+EA Emblynette 2159

Hallstrand H523

HALLSTRAND ANGUS BRED HEIFERS

47 HALLSTRAND MONNA ANN I85 [DDC]

BD: 04-04-2021 Cow 20295903 Tattoo: I85

*Sitz Stellar 726D #*Mohnen Substantial 272

*Sitz Barricade 632F

19078148 +*SITZ Barbaramere Nell 765D

*SITZ Pride 200B

*Sitz Superior 10971

Sitz Barbaramere Nell 737

#Sitz Alliance 6595

#Sitz Traveler 8180

#Sitz Barbaramere Jet 2698

+Northern Express 0424

Greens Mona Ann 1933

Hallstrand-t 6595 299

16616936 Hoff Mona Ann 1933 321

CED	BEPD	WEPD	YEPD	MILK	CW	MARB	RE	\$M	\$W	\$B	\$C
+2	+2.5	+64	+109	+22	1+43	1+.69	1+.34	+65	+53	+136	+241

• A special feature with an individual weaning ratio of 107 by the Genex sire Sitz Barricade 632F from a proven dam by the Genex Pathfinder Sire Sitz Alliance 6595.

• Bred to calve May 2023 to ELLINGSON RANGELAND 1190 or ELLINGSON THREE RIVERS 0158. Examined safe.



HALLSTRAND MONA ANN I85 • Lot 47

48 HALLSTRAND MONA ANN I31 [DDF]

BD: 03-27-2021 Cow 20273074 Tattoo: I31

#*PA Power Tool 9108

#*G A R Predestined

#*Raven Powerball 53

17632447 +*Raven Emma E 4241

*Shamrocks Beebee Queen 3095

#*Hoover Dam

PCAR Emma E 2215

#**Quaker Hill Rampage 0A36

#MCC Daybreak

Hallstrand Mona Ann E29

19029267 Hallstrand-t 6595 299

+*QHf Blackcap 6E2 of 4V16 4355

#Sitz Alliance 6595

Hoff Mona Ann 1933 321

CED	BEPD	WEPD	YEPD	MILK	CW	MARB	RE	\$M	\$W	\$B	\$C
+15	-1.8	+57	+99	+23	1+38	1+.75	1+.62	+53	+54	+141	+236

• A featured bred heifer by the ABS Global Pathfinder Sire Raven Powerball 53 from the same cow family as Lot 47.

• Bred to calve May 2023 to ELLINGSON RANGELAND 1190 or ELLINGSON THREE RIVERS 0158. Examined safe.



HALLSTRAND MONA ANN I31 • Lot 48

49 HALLSTRAND LASSIE I159 [M1P-DDF]

BD: 05-06-2021 Cow 20295912 Tattoo: I159

#*Jindra Acclaim

*Jindra 3rd Dimension

Jindra Authority 697

19039484 #*Jindra Chloe J 678 220

+Jindra Blackbird Lassy 1111

+Hoff Insignia 697 224

Hoff Rexella S C 915 678

#**S A V Resource 1441

+Rito 707 of Ideal 3407 7075

Hallstrand Lassie E31

19002744 Hallstrand Predestined 171A

*S A V Blackcap May 4136

#*G A R Predestined

North Fork Lassie 1057

CED	BEPD	WEPD	YEPD	MILK	CW	MARB	RE	\$M	\$W	\$B	\$C
+4	+1.8	+59	+112	+25				+54	+49		

• A daughter of the Hallstrand senior herd sire Jindra Authority 697 descending from Jindra Acclaim and SAV Resource 1441.

• Bred to calve May 2023 to ELLINGSON RANGELAND 1190 or ELLINGSON THREE RIVERS 0158. Examined safe.



50 HALLSTRAND BARBRA I115 [M1F]

BD: 04-18-2021 Cow 20295908 Tattoo: I115

#*Jindra Acclaim

*Jindra 3rd Dimension

Jindra Authority 697

19039484 #*Jindra Chloe J 678 220

+Jindra Blackbird Lassy 1111

+Hoff Insignia 697 224

Hoff Rexella S C 915 678

Hallstrand 6595 H910

#Sitz Alliance 6595

Hallstrand Barbra H311

17788135 Hallstrand Destroyer 491

North Fork Elaine 1185

Hallstrand Destroyer 303A

Hallstrand Meritt 491

CED	BEPD	WEPD	YEPD	MILK	CW	MARB	RE	\$M	\$W	\$B	\$C
+3	+1.6	+56	+99	+30	1+43	1+.21	1+.35	+53	+54	+122	+211

• This heifer has an individual weaning ratio of 107 by the Hallstrand senior herd sire Jindra Authority 697.

• A maternal sister records a progeny weaning ratio of 105 on three calves.

• Bred to calve May 2023 to ELLINGSON RANGELAND 1190 or ELLINGSON THREE RIVERS 0158. Examined safe.





SQUARE B TRUE NORTH 8052

CED	BEPD	WEPD	YEPD	MILK	CW	MARB	RE	\$M	\$W	\$B	\$C
+16	-2.0	+54	+106	+33	+18	+99	+55	+78	+64	+129	+245

Sale Managers

TOM BURKE, KURT SCHAFF, ALEX POPPLEWELL

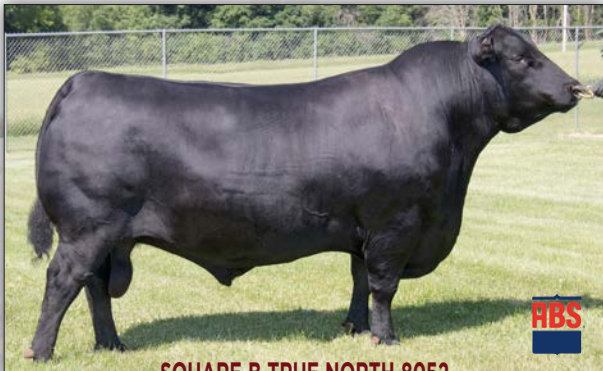
AMERICAN ANGUS HALL OF FAME
at the WORLD ANGUS HEADQUARTERS
Box 660, Smithville, MO 64089-0660.

TEHAMA TAHOE B767

CED	BEPD	WEPD	YEPD	MILK	CW	MARB	RE	\$M	\$W	\$B	\$C
+10	+0	+79	+135	+31	+48	+93	+79	+84	+95	+149	+277

PRSR
FIRST-CLASS
U.S. POSTAGE
PAID
St. Joseph, MO

FEATURED SIRES



SQUARE B TRUE NORTH 8052

CED	BEPD	WEPD	YEPD	MILK	CW	MARB	RE	\$M	\$W	\$B	\$C
+16	-2.0	+54	+106	+33	+20	+98	+57	+80	+64	+131	+250



TEHAMA TAHOE B767

CED	BEPD	WEPD	YEPD	MILK	CW	MARB	RE	\$M	\$W	\$B	\$C
+10	+0	+80	+135	+31	+48	+93	+80	+87	+96	+147	+278



SITZ BARRICADE 632F

CED	BEPD	WEPD	YEPD	MILK		
-1	+4.4	+81	+143	+18		
CW	MARB	RE	\$M	\$W	\$B	\$C
+75	+72	+64	+78	+55	+164	+291



ELLINGSON RANGELAND

CED	BEPD	WEPD	YEPD	MILK		
+7	+2	+70	+124	+34		
CW	MARB	RE	\$M	\$W	\$B	\$C
+63	+55	+77	+78	+73	+159	+284



ELLINGSON THREE RIVERS 8062

CED	BEPD	WEPD	YEPD	MILK		
-8	+5.9	+102	+189	+18		
CW	MARB	RE	\$M	\$W	\$B	\$C
+99	+63	+107	+69	+61	+217	+350



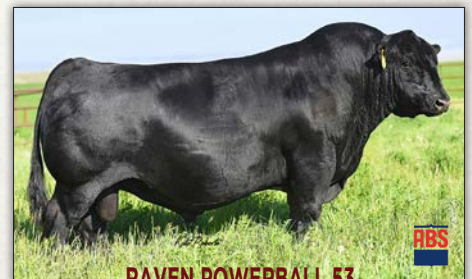
MYERS FAIR-N-SQUARE M39

CED	BEPD	WEPD	YEPD	MILK		
+5	+2.0	+78	+132	+23		
CW	MARB	RE	\$M	\$W	\$B	\$C
+53	+94	+87	+70	+69	+166	+285



BRUIN TORQUE 5261

CED	BEPD	WEPD	YEPD	MILK		
+6	+2.4	+56	+115	+26		
CW	MARB	RE	\$M	\$W	\$B	\$C
+52	+17	+80	+61	+46	+144	+248



RAVEN POWERBALL 53

CED	BEPD	WEPD	YEPD	MILK		
+11	+3	+59	+109	+24		
CW	MARB	RE	\$M	\$W	\$B	\$C
+44	+81	+70	+60	+55	+151	+256